



Kent
Wildlife Trust

Go *wild* and **FUNDRAISE**

to help create a **Wilder Kent**



kentwildlifetrust.org.uk/wilderblean

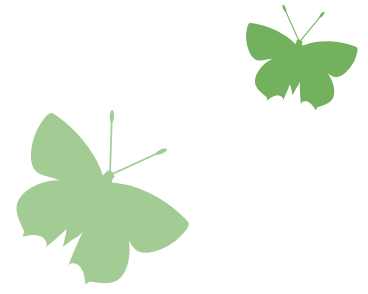
01622 662012 | info@kentwildlife.org.uk
Kent Wildlife Trust, Tyland Barn, Sandling, Maidstone, Kent ME14 3BD
Registered Charity No. 239992. A company limited in England and Wales by guarantee 633098.



Registered with
**FUNDRAISING
REGULATOR**

Action and innovation **for nature**

Making a difference



Thank you for downloading this fundraising pack. Your support – no matter how big or small – will make a difference to wildlife in Kent.

By completing the activities in this fundraising pack, you will be helping us to shine a light on this exciting project and raise money to support the bison as they settle into Kent. Wear your bison mask proudly, enjoy your bison biscuits and, most importantly, talk to your friends and family about this crucial project. Bison will increase biodiversity, restore nature and tackle the climate crisis – your fundraising will enable this to happen.

Bison are incredible animals. They are about 6ft tall, with horns and a hump. They might seem a bit scary at first but they are mild mannered and very furry.

Bison are being introduced to Kent because they are “ecosystem engineers”. This means that they change the environment around them through their natural behaviours.

For example, bison like a good scratch – they rub against trees and eat bark, causing the trees to fall and allowing more sunlight to reach the woodland floor. This helps many plant species to thrive.

The presence of bison in Kent will restore natural processes to our woodlands and help many species of insects, animals and plants to thrive!

Soon, you might be able to catch a glimpse of bison during your walk through Blean Woods. Or, you might spot our other grazing species: Exmoor ponies, longhorn cattle or some very hairy Iron Age pigs.

If you can't spot these animals, you might be able to hear them! Listen out for a bison bellow – imagine a cow mooing... with a sore throat!

Thank you again and bye(son) for now!
Kent Wildlife Trust team

BISON © DONOVAN WRIGHT

Bison love dustbathing - rolling around in the soil. This activity creates brilliant habitats for a huge range of insects.



Get in touch!

If you want to speak to one of our team please email fundraising@kentwildlife.org.uk or call **01622 357800**.

.....



To find out more about our Wilder Blean project, scan the QR code.

Need some inspiration?

We've included some fantastic ideas to get you started on your fundraising journey!

1. Bison Banquet

Host a bison themed banquet for your guests or even at your school or local club.

3. Join the herd

Why not spread the word by having a bake sale, raffle or tombola.



4. Bee creative

Organise an in-school drawing or photography competition, or take part in 30 Days Wild. Visit wildlifetrusts.org/30dayswild to learn more!

2. Go wild

Get active by hosting a wild walk or wild disco. The wilder the better!



TOP TIP!

Why not plan your fundraising around a special wildlife-related date? By adding your voice to local, national and international events taking place on these key dates, you can publicise your efforts and increase the likelihood of progress and securing wins for wildlife!

Our favourite dates are:

- 20 March:** World Rewilding Day
- June:** 30 Days Wild
- 5 June:** World Environment Day
- October:** Big Wild Walk
- 4 Dec:** Wildlife Conservation Day

Any funds you raise will go towards a #WilderKent!

Bison bakes

Use our bison cut outs below to create a template for your very own bison biscuit bakes!



1 Cut out your bison biscuit templates and preheat your oven.



3 Decorate your biscuits! Get creative with your decoration, maybe use icing sugar to create horns on your bison biscuits.

2 Follow a biscuit recipe to create your dough ready to bake!

Why not try this one?



You are ready to start your cake sale! Remember to share the news of your event. You can use the posters and social tiles in your fundraising pack.

Any funds you raise will go towards a #WilderKent!

Wear it WILD



Get creative!

Bison have extremely thick and coarse fur. How can you re-create these textures on your mask? Try out some new materials and see what you can create!

TOP TIP!

Use the dotted line to cut out and decorate your very own bison mask!