



# Wilder Kent AWARDS

2024 Guide For Entrants

## Community Groups



Find us online

[kentwildlifetrust.org.uk](https://kentwildlifetrust.org.uk)



Kent Wildlife Trust, Tyland Barn, Sandling, Maidstone Kent, ME14 3BD.  
Registered Charity Number 239992. A company registered in England &  
Wales by guarantee 633098. © Kent Wildlife Trust. All rights reserved.



**Kent**  
Wildlife Trust

# Contents

Who are we?	3
Wilder Kent Awards	4
Why enter the Wilder Kent Awards?	5
Get involved - Protect wildlife	6
Get involved - Sustainability and carbon reduction	8
Get involved - Engage with nature	10
The facts behind our three categories	12
Submitting your application	13

# Who are we?

Kent Wildlife Trust is the leading conservation charity in the South East and one of 46 national Wildlife Trusts.

For over 60 years we have been saving and improving habitats to ensure that Kent's wildlife can thrive and people can enjoy the natural world around them. With your help, we can continue to do this for generations to come.



We work with landowners and developers.



We run education programmes for people of all ages.



We manage over 80 reserves and nearly 10,000 acres.

## Our vision

To ensure that 30% of Kent's land and sea displays increased climate resilience and contains abundant wildlife.



### We defend and restore

Ensure that Kent Wildlife Trust Group (KWTG) is delivering the highest possible impact in the face of habitat loss and climate change.



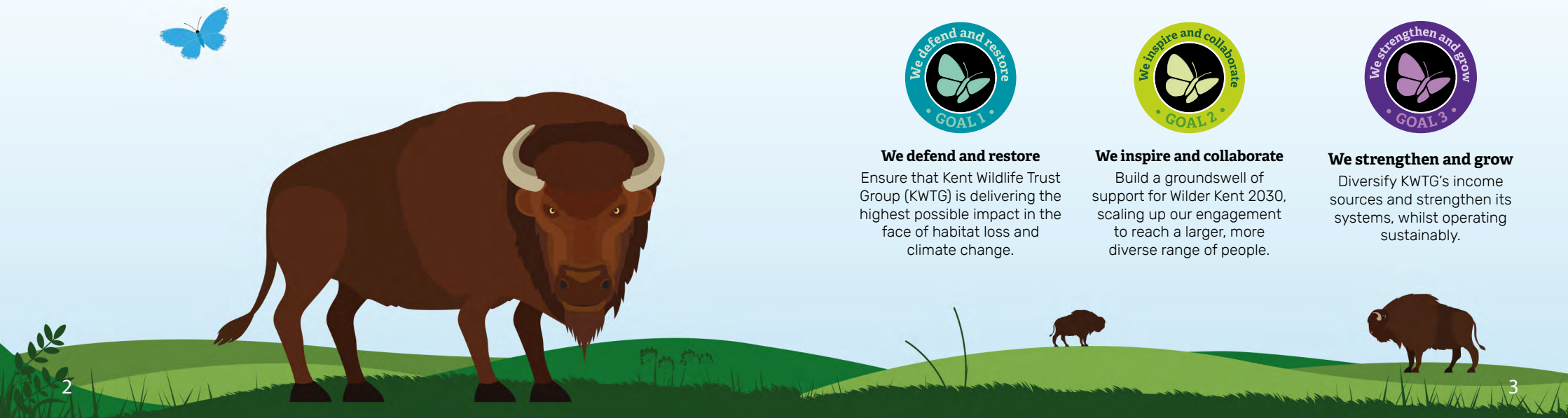
### We inspire and collaborate

Build a groundswell of support for Wilder Kent 2030, scaling up our engagement to reach a larger, more diverse range of people.



### We strengthen and grow

Diversify KWTG's income sources and strengthen its systems, whilst operating sustainably.



# Wilder Kent Awards

## Background

The natural world isn't just something for us to enjoy; it sustains us. The decline in nature puts our very survival and prosperity under threat. It doesn't have to be like this, together we can create a Wilder Kent.

We are delighted that you are considering entering the Wilder Kent Awards and joining the other wonderful community groups that are doing their part to make a Wilder Kent. We can't wait to hear about all of the ways you are helping to restore nature by taking positive action to promote a Wilder Kent.



## Entering

All of the award criteria are outlined in this guide and there are multiple award tiers (commendation, bronze, silver and gold) that can be achieved. The more criteria you meet, the higher your award will be.

By entering, you will be showing your ambition to connect people with nature and protect wildlife for the future. Any achievement is a helping hand for wildlife and the scheme allows you to increase your award level year on year so you can help wildlife for as long as possible.

No matter how many criteria you can meet we would like to thank and congratulate you for your efforts in helping to create a Wilder Kent.

# Why enter the Wilder Kent Awards?



## There are many benefits to entering:

- Help tackle 'Nature deficit disorder'.
- Improve your health and well-being, physically and mentally.
- Personal satisfaction that you have made a real difference.
- Safeguard nature and wildlife for future generations.
- Enjoy new experiences and learn new life and craft skills.
- Spend time in the fresh air and appreciate nature.

## Get started!

There are dozens of ideas over the next few pages for simple things you can do to start making an impact and help us create a Wilder Kent.

# 1 **GET INVOLVED** Protect wildlife

Protect wildlife in your community by creating and developing new habitats that provide food, shelter and water to support nature. Work together to advocate for our natural environment.

You could . . .



Have a wildlife garden / space supporting a range of wildlife.

[Learn more](#)



Ensure areas of long grass are left to provide wildlife habitat on site.

[Learn more](#)



Install and maintain bird boxes where appropriate.

[Learn more](#)



Ensure that no chemicals are used on the gardens or wild areas.

[Learn more](#)



Introduce a pond that will sustain a variety of wildlife.

[Learn more](#)



Install simple water sources for wildlife and keep them clean.

[Learn more](#)



Influence others to maximise impact and available space for wildlife.

[Learn more](#)



Have a Wilder Kent committee made up of staff and students that meets regularly and monitors actions.

[Learn more](#)



Carry out litter picks both on your school site and in the local community.

[Learn more](#)



Install and maintain hedgehog boxes where appropriate.

[Learn more](#)



Install and maintain bat boxes where appropriate.

[Learn more](#)



Install and maintain minibeast homes at all suitable places.

[Learn more](#)



Write to your MP about a local wildlife or climate issue.

[Learn more](#)



Conduct surveys to identify wildlife and monitor it within your project.

[Learn more](#)



Leave food for wildlife during winter months.

[Learn more](#)





# 2 GET INVOLVED Sustainability and carbon reduction

Improve the environmental sustainability of your organisation and its members to reduce your carbon footprint.

You could ...



Use water saving devices in any older toilets and washrooms.

[Learn more](#)



Monitor and improve your group's energy consumption.

[Learn more](#)



Ensure that energy from renewable sources is used on the group site.

[Learn more](#)



Promote recycling within your group.

[Learn more](#)



Promote walking, as opposed to cars, within your group.

[Learn more](#)



Promote energy saving solutions within your group.

[Learn more](#)



Create a policy to eliminate single use plastic within your group.

[Learn more](#)



Encourage your community to purchase locally sourced food.

[Learn more](#)



Advocate for a meat free day a week and share information on why it helps.



Reuse and re-purpose old materials to help wildlife.

[Learn more](#)



Where possible, recycle and reuse organic matter to create habitats on site (e.g dead hedges, leaf piles).

[Learn more](#)



Encourage people to turn off their car engine whilst sat waiting in traffic.

[Learn more](#)



Monitor and improve your group's water consumption.

[Learn more](#)



Use butts to capture rainwater for use in gardens and community areas.

[Learn more](#)



Encourage water and paper saving devices in toilets and washrooms.



# 3 GET INVOLVED Engage with nature

Learn about the wildlife in Kent and how we can support it. Deliver activities that engage and inspire others to get involved with their natural environment and support nature.

You could ...



Plant native trees, hedgerows and shrubs.

[Learn more](#)



Run regular outdoor learning sessions often and encourage working outside.



Work with a local business or group to improve multiple areas for wildlife.

[Learn more](#)



Have a 'Wilder Kent Champion' promoting the awards and your actions to the group.



Ensure that members have a chance to learn about Kent's wildlife.

[Learn more](#)



Encourage people to grow nectar rich plants at home and consider providing free seeds.

[Learn more](#)



Carry out a fundraising day to help out a wildlife or conservation charity of your choice.

[Learn more](#)

## Don't stop there!

These pages have given some good ideas for how you can help Kent's wildlife and educate the next generation of nature-loving enthusiasts. Check out our Actions page for more ideas on how you can help wildlife [kentwildlifetrust.org.uk/actions](https://kentwildlifetrust.org.uk/actions)

But it doesn't end there! Come up with your own ideas and involve as many people as you can. Once your community group is achieving gains for wildlife, why not involve other nearby groups and begin to create a network of Wilder Community Groups across your local area?



Engage with the wider community in creating wild areas locally for all.

[Learn more](#)



Engage with campaigns and projects like our 'Action for Insects' initiative or 'Wilder Blean' project.

[Learn more](#)



Organise group visits to local nature reserves and sites.

[Learn more](#)

# The facts behind our three categories

## 1 Protect wildlife

- Around 3 / 4 of crops require pollination by insects.<sup>1</sup>
- 41% of insects face extinction.<sup>2</sup>
- 30 to 50% of all species could be extinct by mid-century.<sup>3</sup>

## 2 Sustainability and carbon reduction

- The average hamburger takes 2,400 litres of water to produce.<sup>4</sup>
- Lighting accounts for 15% of global electricity use. Switching to LEDs will use 90% less energy and last longer than standard lights.<sup>5</sup>
- Decomposing matter in landfills produces methane gas, which contributes 34x more to climate change than CO2.<sup>6</sup>
- Recycling one ton of paper saves 2,548 litres of oil, 26,498 litres of water and 2.5 cubic metres of landfill space.<sup>7</sup>
- Recycling one ton of paper saves 17 trees.<sup>8</sup>

## 3 Engage with nature

- 95% of participants with low levels of mental wellbeing reported an improvement in their mental health in six weeks after starting a Wildlife Trust programme.<sup>9</sup>
- Of 87 schools, 92% reported outdoor learning improved pupil health and wellbeing and engaged pupils with learning.<sup>10</sup>
- Of 448 pupils, 90% reported they felt happier and healthier.<sup>11</sup>

### References

1. The Wildlife Trusts
2. [wildlifetrusts.org/take-action-insects](https://wildlifetrusts.org/take-action-insects)
3. [dosomething.org/us/](https://dosomething.org/us/)

4. [sumas.ch/sustainability-statistics](https://sumas.ch/sustainability-statistics)

5, 6, 7, 8. [sumas.ch/sustainability-facts/](https://sumas.ch/sustainability-facts/)

9. A Natural Health Service Report 2019

10, 11. Natural Connections Project, L0tC

# Submitting your application

Our awards acknowledge the work of community groups that are helping adults and children reconnect with nature. Their action benefits us locally and helps tackle the global environmental threats we all face.

Throughout your journey, please fill in your submission form to keep track of how you are meeting each of our awards' criteria. All the while, ensure you are collecting supporting evidence. Your evidence may include photos and videos, reports, data, other certificates or press coverage.

Once you have filled out your submission form and gathered your evidence, you are ready to submit! Contact us for help or alternative methods [awards@kentwildlife.org.uk](mailto:awards@kentwildlife.org.uk).

## Upload your evidence:



[kwtg.uk/upload-evidence](https://kwtg.uk/upload-evidence)

To be considered for the 2024 award ceremony, all supporting evidence must be submitted to us by **Friday 31<sup>st</sup> May 2024**.



# Wilder Kent AWARDS



## Find us online

[kentwildlifetrust.org.uk](http://kentwildlifetrust.org.uk)    

Kent Wildlife Trust, Tyland Barn, Sandling, Maidstone Kent, ME14 3BD.  
Registered Charity Number 239992. A company registered in England & Wales by guarantee 633098. © Kent Wildlife Trust. All rights reserved.



**Kent**  
Wildlife Trust