

Land Minibeasts

These creatures come in a wide range of sizes but are all shown as the same size here so it's easy to see all their features.

These creatures have **more than six legs**



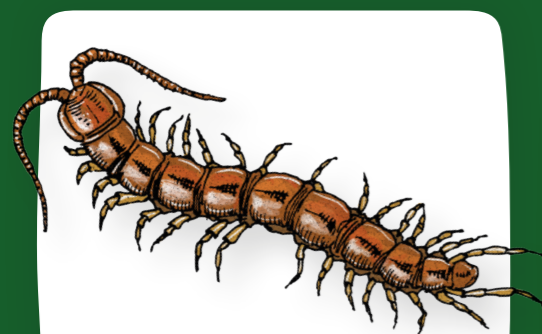
Spider



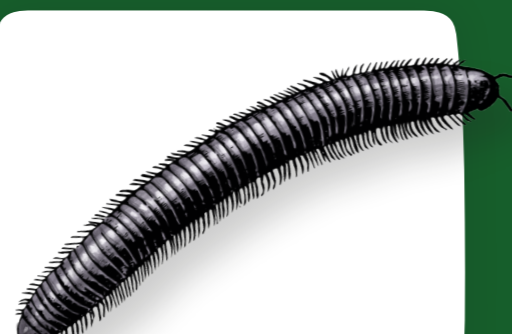
Harvestman



Woodlouse



Centipede

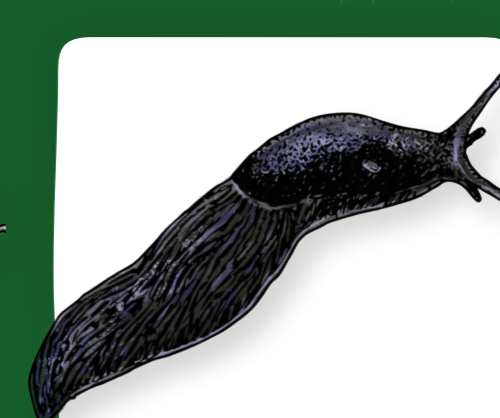


Millipede

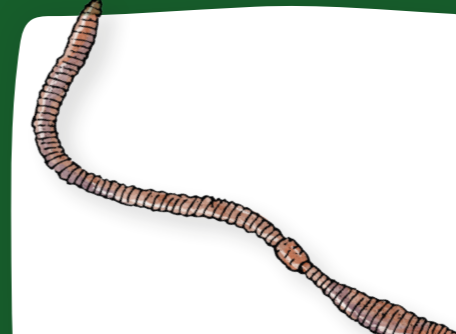
These creatures have **no legs**



Common garden snail



Slug



Earthworm



Ladybird pupa



Learn how to create a minibeast log shelter

kwtg.uk/logshelter

Log piles are perfect hiding places for insects, providing a convenient buffet for frog, birds, and hedgehogs too!

Land Minibeasts



Kent
Wildlife Trust

These creatures come in a wide range of sizes but are all shown as the same size here so it's easy to see all their features.

These creatures have **six legs**



Butterfly



Moth



Crane fly



Hoverfly



Wasp



Bumblebee



Honeybee



Beetle



Weevil



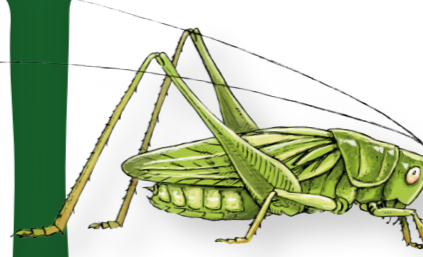
Shield bug



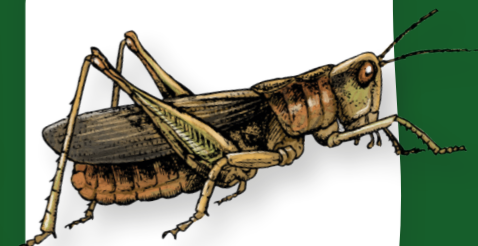
Frog hopper bug



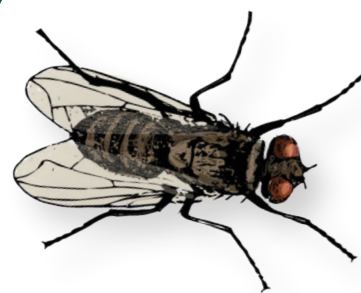
Mirid bug



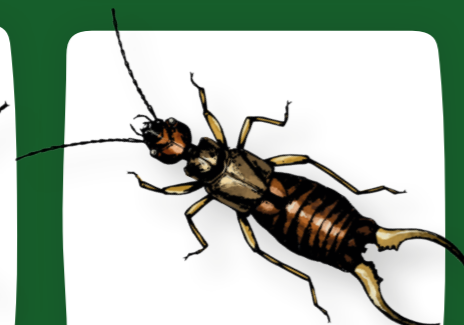
Cricket



Grasshopper



Fly



Earwig



Dragonfly



Damselfly



Ladybird and
ladybird larvae



Ant



Aphid