

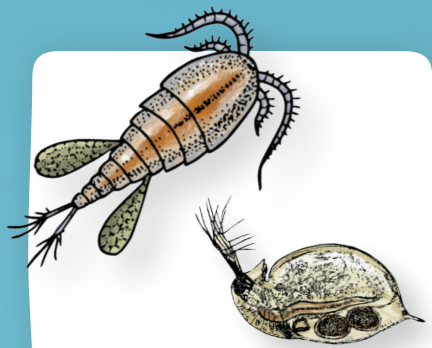
# Pond Minibeasts



**Kent**  
Wildlife Trust

These creatures come in a wide range of sizes but are all shown as the same size here so it's easy to see all their features.

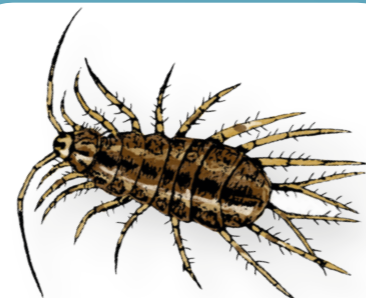
## These creatures have **more than six legs**



Water flea



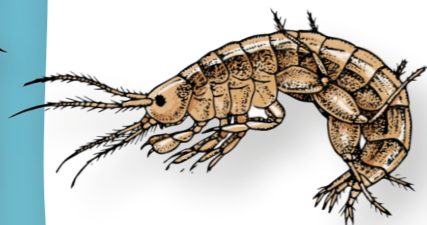
Water mite



Water louse

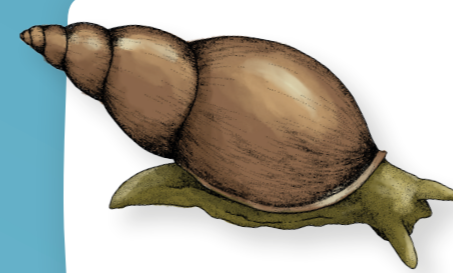


Water spider

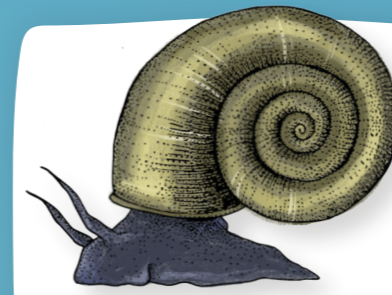


Water shrimp

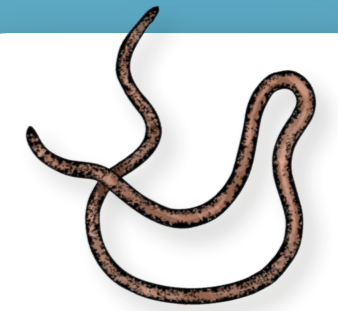
## These creatures have **no legs**



Pond snail



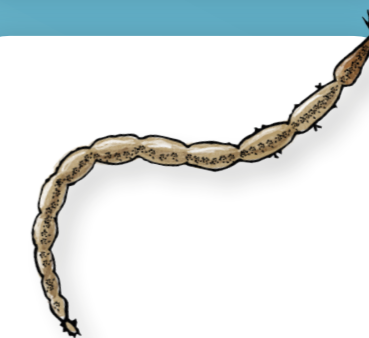
Ramshorn snail



True worm



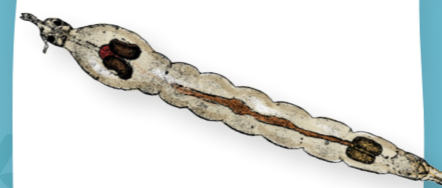
Leech



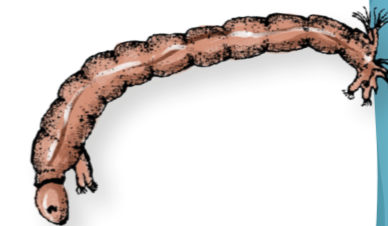
Biting midge larva



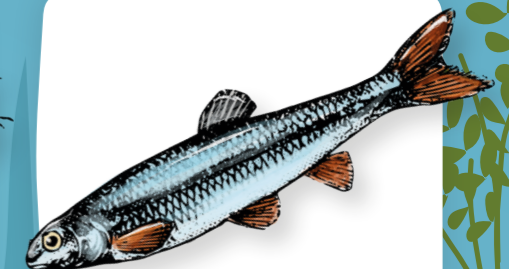
Flatworm



Phantom midge larva



Midge larva



Fish



Learn how to build your own pond:

[kwtg.uk/buildapond](http://kwtg.uk/buildapond)

Even a small pond can be home to an interesting range of wildlife, including damsel and dragonflies, frogs and newts.



Action and innovation for nature

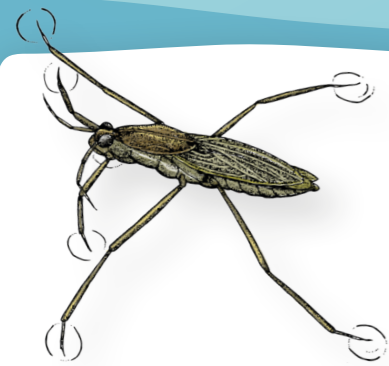
# Pond Minibeasts



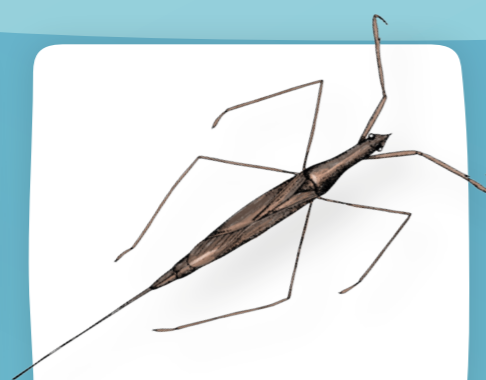
**Kent**  
Wildlife Trust

These creatures come in a wide range of sizes but are all shown as the same size here so it's easy to see all their features.

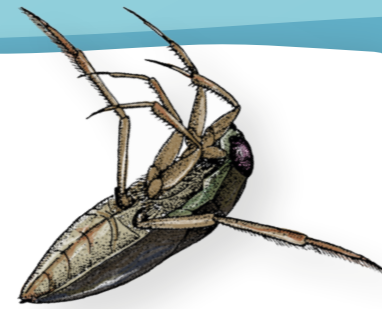
These creatures have **up to six legs**



**Pond skater**



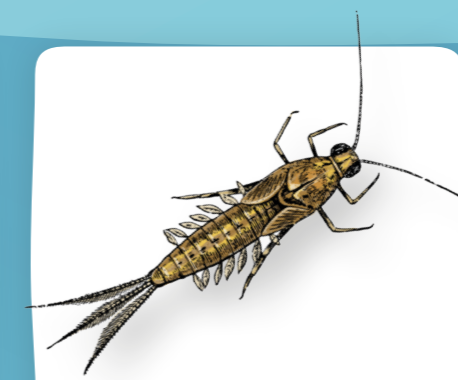
**Water stick insect**



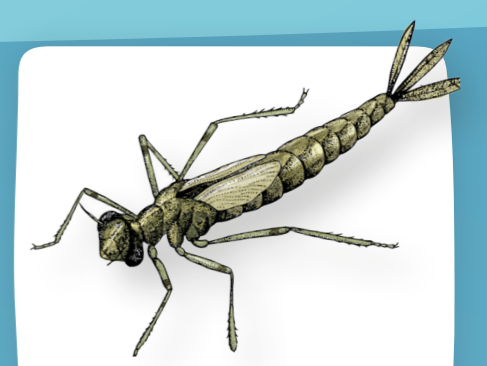
**Greater water boatman**



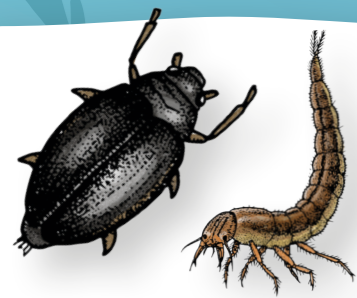
**Lesser water boatman**



**Mayfly nymph**



**Damselfly nymph**



**Water beetle and larva**



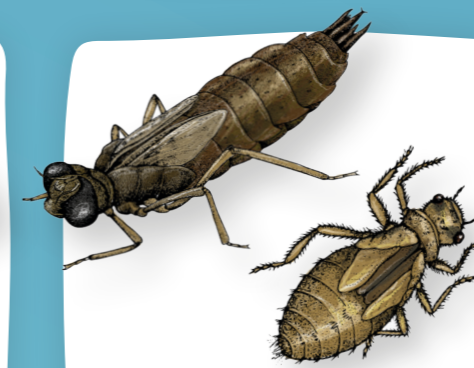
**Screech beetle**



**Saucer bug**



**Caddisfly larvae**



**Dragonfly nymph**



**Newt and newt tadpole**



**Water scorpion**