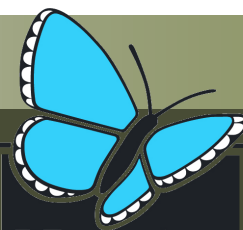


Volunteering with...



**Kent
wildlife
Trust**

Sevenoaks Area Monday Team



We are a happy open minded team who like to get stuck in, conserve wildlife, keep fit (unavoidable with the steep slopes) and enjoy the beautiful landscapes.

All conversational subjects approached during our breaks and be prepared for a good sense of humour!

None of these precious sites could be maintained without the committed efforts of the Monday team



Task Info

We have grazing animals on two sites and we carry out extensive mechanical bramble clearance in the winter.

The meadow work at Hewitt's takes place in the autumn.

There is a chance to get involved with surveys in the summer time.

Why is it important? Magpie Bottom is set in a beautiful secluded valley and holds numerous species of orchids and other chalk grassland plants. Cowden Pound is small and idyllic hidden jewel, a neutral grassland site with ant hills and neutral grassland plants both of these reserves also contain areas of woodland. Hewitt's chalk bank has two meadows and a chalk bank and it is a heaven in the middle of a busy area close to Bromley.

Commitment: every Monday. Come weekly, monthly or on an ad-hoc basis.

Training: Full training is given and you'll only be asked to do work you are comfortable with. There is also the option to do further training in machinery or team leading too.

To Apply:

01622 662012 | volunteering@kentwildlife.org.uk | www.kentwildlifetrust.org.uk/get-involved



Head Office: Kent Wildlife Trust, Tyland Barn, Sandling, Maidstone, Kent ME14 3BD

Tel: 01622 662012

info@kentwildlife.org.uk | kentwildlifetrust.org.uk

Registered Charity No. 239992. A company limited in England and Wales by guarantee 633098. Registered at the above address.



Registered with
FUNDRAISING
REGULATOR

Volunteering with...

Sevenoaks Area Monday Team

Before you go:

Task locations can change at short notice so it is important to check in with the warden in advance. Wear old clothes, waterproofs or sun hat (according to the weather) and strong shoes (wellies may be needed). Bring a drink and a packed lunch and plenty to drink as well as and a foldable seat if you plan to stay all day.

Contact:

Susanna Clerici 07717 530 208

Getting here:

Meet the team at Sevenoaks Wildlife Reserve at 9.00 a.m. to load the van and travel to other listed reserves.

Access Requirements:

If you have any particular access needs please contact the Volunteer Team to discuss

Monday tasks picking up from Sevenoaks Wildlife Reserve, TN13 3DH

Please note that if you intend to meet the team at site it is essential you contact the warden in advance as meeting places vary.

Cowden Pound Pasture Nature Reserve, Hartfield Road, Cowden Pound, Sevenoaks, TN8 5NP

Hewitt's Chalk Bank, Just off A21, opposite Sevenoaks road, Knockholt, Orpington, BR6 7SH

Magpie Bottom Nature Reserve Kent, TN15 6XP.

Tasks for May

Monday 6th May: Cowden Pound: Creeping scrub clearance

Monday 13th May: Hewitt's Chalk Bank: Path clearance

Monday 20th May: Cowden: Bracken clearance

Monday 27th May: Magpie Bottom: Creeping scrub clearance and stiles maintenance.

Tasks for June

Every Monday will be at Magpie Bottom for the ecology group and ragwort pulling



Head Office: Kent Wildlife Trust, Tyland Barn, Sandling, Maidstone, Kent ME14 3BD

Tel: 01622 662012

info@kentwildlife.org.uk | kentwildlifetrust.org.uk

Registered Charity No. 239992. A company limited in England and Wales by guarantee 633098. Registered at the above address.

